

FEATURES

STANDARD



METAL EMBOSSEER SERIES ME 2000 VISION SYSTEM

USED BY:

- MANUFACTURING COMPANIES

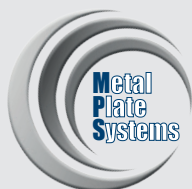
IDEAL FOR:

- VIN PLATES
- SHIPPING LABELS
- MOTOR / ENGINE LABELS
- INVENTORY TAGS
- ELECTRICAL COMPONENT LABELS
- MANUFACTURER OF:
 - WHITE GOODS
 - MOTORS
 - VALVES
 - PUMPS
 - LIFTS
 - CRANES
 - FIRE DOORS
 - LOGGING INDUSTRIES
 - LOGISTICS MANAGERMENTS

SOFTWARE



OPTIONAL:



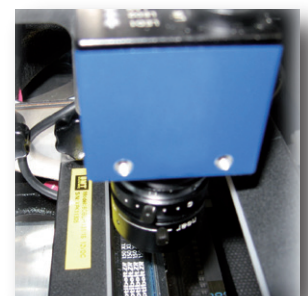
INTELLIGENT METAL PLATE MARKING WHERE TRACEABILITY AND ACCOUNTABILITY MATTER BUILT IN VISION INSPECTION AND VERIFICATION SYSTEM

THE IDEAL SOLUTION WHEN

- ✓ Accuracy of the data on the plate is critical
- ✓ Incorrectly embossed data impacts liability
- ✓ Embossed data matching is required
- ✓ TQM (ISO9000) is implemented company wide
- ✓ Productions statistics are gathered in real-time for efficiency management
- ✓ Plate images must be archived

THE IDEAL SOLUTION FOR

- ✓ Error proofing - instant data verification
- ✓ TQM - production statistics
- ✓ Audit - store image of plates produced
- ✓ Component liability management and post sale verification



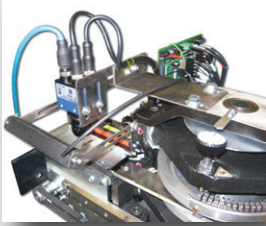
Built in vision inspection and verification system



TECHNICAL FEATURES

PLATE & FEEDER

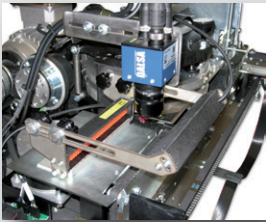
dimensions	width: 30 ÷ 115 mm / 1.18 ÷ 4.53 in height: 21 ÷ 90 mm / 0.83 ÷ 3.54 in
thickness	0.4 ÷ 0.9 mm / 0.0157 ÷ 0.0354 in
materials	stainless steel, carbon steel, aluminium, copper and brass
input hopper	up to 250 plates capacity (Ø 0,4 mm/0.0157 in)
output hopper	side eject only



Metal embossing

EMBOSSING

technology	embossing
drum capacity	60 or 90 slots - 45 slots drum available for special applications
type set	many characters configuration available: Simplex 2, OCRB1, BlockUSA, Double Block, etc. Height 3 ÷ 12 mm / 0.118 ÷ 0.472 in.
embossing area	from the top edge up to 65 mm / 2.56", leaving free a 4 mm / 0.157" bottom edge. Reversed character sets are available on request for embossing close to the bottom edge of the tag. Measurements are taken from the base of the character
performance	1 plate in 18 sec. (55 characters)



Inspection camera

COMMUNICATION INTERFACE & SOFTWARE

communication interface	RS232 serial port
operating system	PowerTag 2D PC application proprietary software compatible with Windows 7/8/10
protocol	CIM, Xon-Xoff, MultiEmbosser, Stored Format default, Stored format Select and Pound-Pound
LCD Edit	via external keyboard; 20 storable formats downloadable
data format	50 fields of 42 characters each (Variable, Fixed data, Counters, etc.)



Image capturing

HARDWARE

power supply	100 - 117 - 220 - 230 o 240 Volt - 50 o 60 Hz
power consumption	800 Watt
operating environment	temperature: 5 ÷ 40° C / 41 ÷ 104 °F relative humidity: 30% ÷ 90% non condensing
dimensions (WxDxH)	630 x 740 x 380 mm / 24.8 x 29.1 x 15 in
weight	78 Kg / 172 lbs

VARIOUS

LCD display	2 lines of 40 characters LCD display for diagnostics and offline operation
camera	an entire vision inspection system contained within the embosser monochrome camera lighting unit internal CPU ethernet connection management software

ME2000VS
vision system



cim-usa.com

