

## FEATURES



## USED BY:

- SHIPYARDS
- STEEL PLANTS
- MILITARY
- MANUFACTURERS OF:  
WHITE GOODS  
MOTORS  
VALVES  
PUMPS  
LIFTS  
CRANES  
FIRE DOORS  
LOGGING INDUSTRIES
- LOGISTICS MANAGEMENT
- POWER AND UTILITY COMPANIES

## IDEAL FOR:

- MILITARY ID TAGS
- CABLE AND HOSE TAGS
- INVENTORY, ASSET CONTROL  
AND TRACKING TAGS FOR  
HARSH ENVIRONMENTS
- WORK IN PROGRESS
- COMPONENT ID
- TAGS FOR GALVANIZED OR  
HEAT-TREATED PROCESSES
- SERIAL NUMBER TAGS

## FULLY STAND ALONE SOLUTION

ALL FUNCTION'S NEEDED  
ALREADY BUILT INTO  
THE MACHINE'S CPU

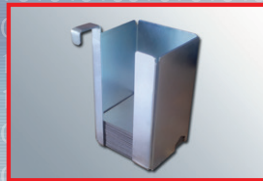
## SOFTWARE

OPZIONAL:

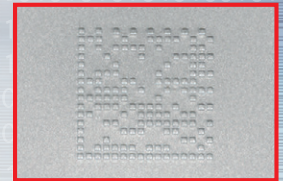


# METAL EMBOSSEER SERIES ME 500 2D DATA MATRIX

## 2D Data Matrix



Interchangeable input hopper  
for multiple plates



2D DATA MATRIX code

## THE PORTABLE SOLUTION FOR EMBOSSEING OF METAL PLATES WITH 2D DATA MATRIX CODE

The **ME 500 2D Data Matrix** is a portable **METAL TAG EMBOSSEING SOLUTION** that offers the ability to emboss different tag sizes, it is developed for component and production line identification and traceability applications. The **ME 500 2D Data Matrix** is equipped with an Automatic Feeder, the input hopper contains up to 120 standard tags.

The **ME 500 2D Data Matrix** allows to mark ALPHANUMERIC CHARACTERS and **2D DATA MATRIX** codes on metal tags. The **2D DATA MATRIX** code has the great advantage of containing a high volume of data on limited space.

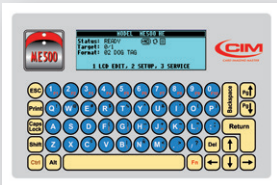
The **ME 500 2D Data Matrix** is a completely self-contained tag marking machine that is **EASY TO TRANSPORT**, and is ideal for permanent marking of aluminum and steel tags. Designed to **OPERATE IN HARSH INDUSTRIAL ENVIRONMENTS**, the **ME 500 2D Data Matrix** is equipped with a **BUILT-IN LINUX BASED CPU** and an industrial spill proof membrane keyboard that allows the machine to work completely stand-alone without a PC. The interface is user-friendly and the large high resolution **LCD DISPLAY** makes data entry quick and easy in any production environment.



# FEATURES AND SPECIFICATIONS



Internal view



Integrated standard keyboard



Easy to carry handle



**2D Data Matrix**



## PLATE AND FEEDER

<b>dimensions</b>	Metal plates up to 60 x 65 mm
<b>materials</b>	aluminum, stainless steel
<b>thickness</b>	Metal plates: 0.3556 – 0.70 mm / 0.014 - 0.027 in
<b>input hopper</b>	up to 120 plates capacity (0.4 mm / 0.0157 in)

## MARKING

<b>technology</b>	Embossing
<b>drum capacity</b>	60 slots
<b>type set</b>	Simplex 2, Block USA, Block 5
<b>embossing area</b>	up to 10 lines/20 characters
<b>performance</b>	Metal plates: one plate each 34" (5 lines – 12 characters)

2D Data Matrix	Spacing	Dot	Performance
12x12	SP=04	0.50 mm	1 plate each 43 sec
14x14	SP=04	0.50 mm	1 plate each 52 sec
16x16	SP=04	0.50 mm	1 plate each 67 sec

## COMMUNICATION AND SOFTWARE

<b>interface</b>	RS232 serial and USB 2.0 port
<b>software</b>	Linux based self enclosed software opzional: <b>PowerTag</b> application proprietary software compatible with Windows 7/8/10
<b>direct control</b>	CIM, Xon-Xoff, MultiEmbosser, Stored Format default, Stored Format
<b>protocol</b>	Selected and Pound-Pound: for internal application development

## HARDWARE

<b>power supply</b>	universal switching power supply 100-240 Volts; 50 or 60 Hz
<b>power consumption</b>	300 W max
<b>operating environment</b>	temperature: 5°÷ 40°C 7 / 41°÷104° F relative humidity 30% ÷ 90°
<b>dimensions (WxDxH)</b>	455 x 605 x 280 mm / 17,91 x 23.81 x 11.02 in
<b>weight</b>	30 Kg / 68 lbs

## VARIOUS

<b>LCD display</b>	innovative backlight LCD (320 x 180 mm) display with high readability and reversed characters for direct sun view
<b>others</b>	built in keyboard easy to carry handle multilingual menu: english, spanish, italian

The **ME 500 2D Data Matrix** has been designed as the ideal no hassle for low to medium metal plates.

The **ME 500 2D Data Matrix** is equipped with an **Automatic Feeder**, the input hopper contains up to 120 standard tags.

The **ME 500 2D Data Matrix** is able to emboss up to 105 metal plates per hour. The unit weighs 30 Kg, making it a compact, rugged, all inclusive solutions for metal plates.

The **ME 500 2D Data Matrix** comes with an integrated Linux based CPU that allows the machine to work completely stand alone.

[cim-usa.com](http://cim-usa.com)

